

Growing Impact: Sharing Insights on the Florida Metro Consortium and Florida State College Collaborations

Scott Mauro, Florida Consortium of Metropolitan Research Universities
Kimberly Lent Morales, Helios Education Foundation
Debra Bragg, Bragg & Associates



SCOTT MAURO



Associate Director of Strategy

- Consortium Associate Director (2021 to present)
- Two-time UCF grad (BA: Broadcast Journalism, MA: Educational Leadership)
- 13 years in television news in Las Vegas, Green Bay, Fort Myers-Naples, Orlando
- 13 years in student affairs at UCF



KIMBERLY LENT MORALES



Director, Research & Evaluation

- Assistant Director for Research & Policy, FCAN
- Senior Social & Behavioral Researcher, USF/The Villages Health Partnership
- BA, Political Science, U of Florida
- MS, Public Health, USF
- Doctoral student, Measurement & Evaluation, USF



DEBRA BRAGG



President, Bragg & Associates

- Endowed Professor Emerita, University of Illinois at Urbana-Champaign (UIUC)
- Founding Director, Office of Community College Research & Leadership, UIUC
- Founding Director, Community College Research Initiatives, University of Washington
- PhD, Comprehensive Vocational Education, Specialization in Higher Education, Public Policy and Evaluation



CONSORTIUM IMPACT: COLLABORATION FUELS RESULTS



- AWARDED NEARLY \$4.4 MILLION IN GRANTS IN 10 YEARS
- CONSORTIUM CONVENINGS LED TO EDUCATIONAL OPPORTUNITIES FOR NEARLY 1100 HIGHER EDUCATION PROFESSIONALS WITH DIRECT IMPACT ON STUDENTS
(2023 HELIOS GRANT ANNUAL REPORT)
- RENEWAL OF LIGHTCAST CONTRACT FY25 AND SHARING THE COST TO PROVE OUR VALUE
- 2024 NATIONAL STUDENT SUCCESS CONFERENCE
 - FIRST IN-PERSON CONVENING IN FOUR YEARS
 - \$100,000 IN SPONSORSHIPS & EXHIBITORS
 - 290 ATTENDEES
 - A DESTINATION NATIONAL CONFERENCE OF HIGHER EDUCATION'S THOUGHT LEADERS
 - CONVENED A PRESIDENT'S PANEL DISCUSSION ON THE VALUE OF HIGHER EDUCATION IN PARTNERSHIP WITH HELIOS



CONSORTIUM IMPACT BY THE NUMBERS

Florida Consortium members contribute

 **\$19 Billion**
annually to Florida's economy



494,009 + Alumni work and live in Florida

That's **53%** of all Florida workers who identify on their LinkedIn profiles, they received a bachelor's, master's or doctoral degree from an SUS

Collectively we employ **49,800** Full and Part-Time Employees
With an average salary of **\$52,000**

*According to Lightcast Data, every employee in higher education supports 2-3 non-university jobs with an annual economic impact of **\$115,000** per year.*

In FY 23 Florida Consortium Members engaged in **\$1.17 Billion** In Funded Research

And were awarded **237** Utility Patents
FIU, UCF, & USF ALL IN TOP 25 FOR PUBLIC UNIVERSITIES



This research has an over **300%** Return on Investment

A Florida Consortium University is the top talent source for . . .

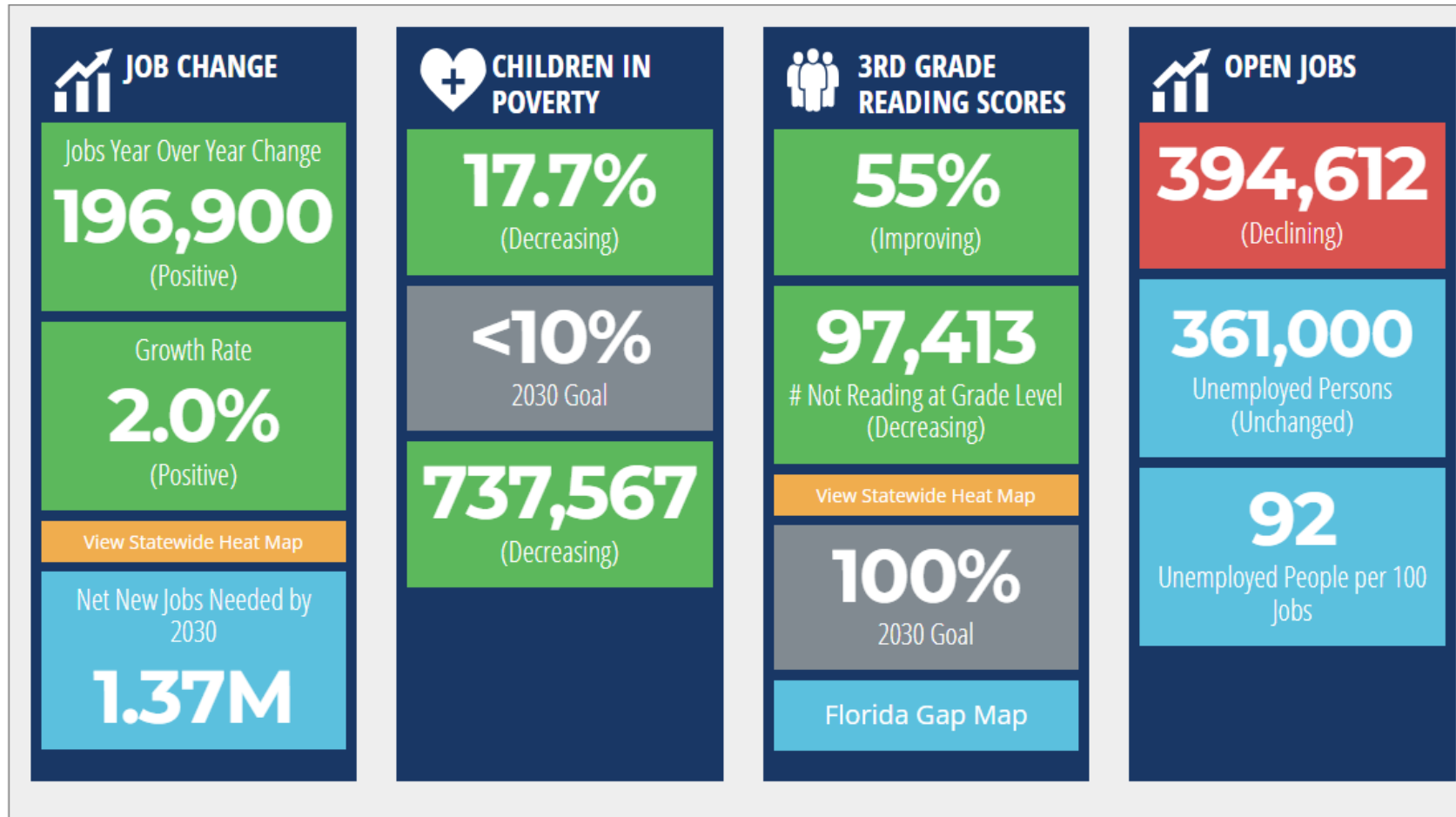
36 of the **TOP 50** Largest Employers in the State
That's **27%** of ALL Florida 50 Companies Employees

Each year, The Florida Consortium sends over 3,000 more graduates who will live and work in Florida than the rest of the other SUS members COMBINED. That's Impact!



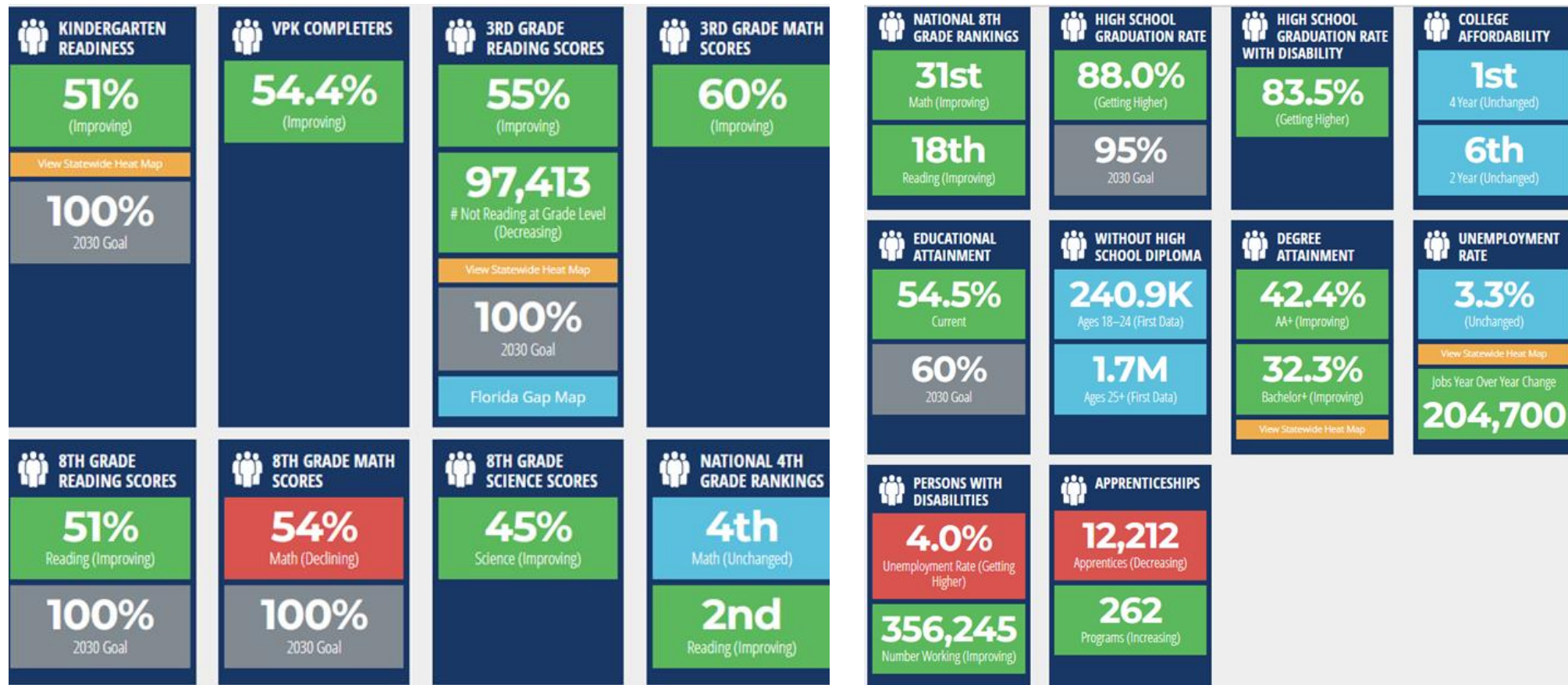
CONSORTIUM IMPACT: FL SCORECARD

STATE OF FLORIDA WORKFORCE CLIMATE



CONSORTIUM IMPACT: PARTNERSHIP INNOVATIVE OPPORTUNITIES

FLORIDA SCORECARD EDUCATION DATA (OCTOBER 2024)



A low-angle photograph of a graduation ceremony. Numerous black mortarboard caps with red tassels are suspended in the air, having just been thrown. In the foreground, many hands are raised in celebration, some holding caps. The background shows a large, light-colored building with many windows. The image is split into two color-tinted sections: a teal section on the left and a blue section on the right.

Consortium Transfer Success Project

FIU TRANSFER SUCCESS COACHING



- Transfer coach is creating a large portfolio of students.

Levels of Engagement/Coaching	Cumulative Number Students
Outreach, including self-referral, unit referral	1302
Engaged with in transfer coach	150
Transfer Coaching (Life coaching)	111

- FIU students receiving need not receive coaching to get a scholarship, ranging from \$400 to ~\$2000 (median = \$1000) to support bachelor's completion.

Student Characteristics	2023 23 Scholarship Recipients		2024 6 New Scholarship Recipients	
	Number	Percent	Number	Percent
Women	13	61%	5	83%
Men	9	39%	1	17%
Racially Minoritized	21	91%	6	100%
AA Transfer	22	96%	5	83%
Full-Time Enrolled	22	96%	3	50%
Pell 1st Year	10	43%	1	17%
Avg Cumulative GPA	3.21 / 4.0		3.38/4.0	
Range Cumulative GPA	2.15 - 3.98		2.78 – 3.83	
Avg Transferred Credits	66		67	

Bragg, D. (2024, July). *2024 External Evaluation Report for the Florida Consortium of Metropolitan Research Universities.*



UCF HIGHER EDUCATION ACADEMY & CONSORTIUM'S COACHING COLLABORATIVE

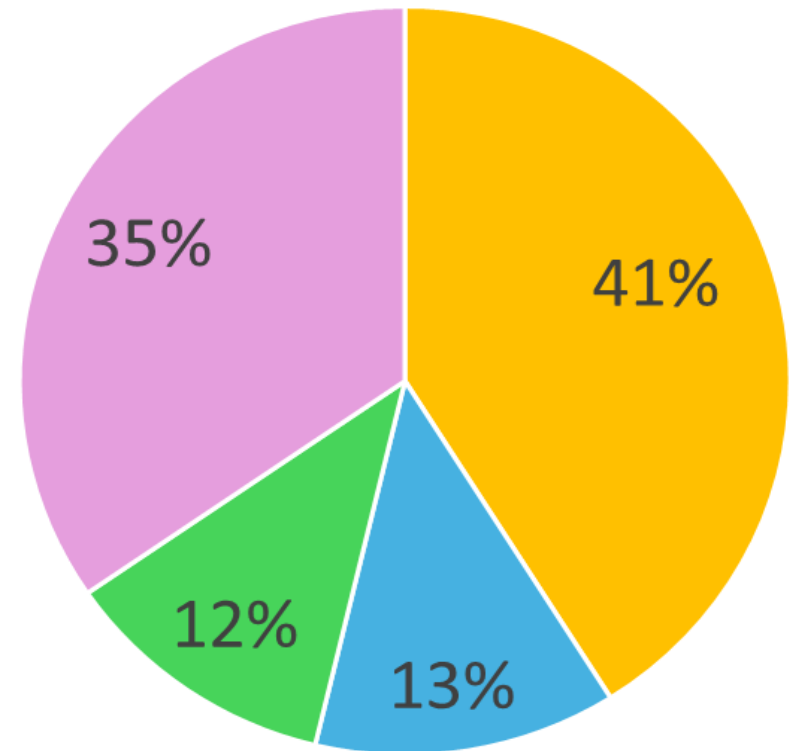
From Spring 2022 through Summer 2024, **480 participants** completed the *Consortium's Coaching Collaborative* training program offered by the UCF Higher Education Coaching Academy.

A total of **314 participants** represented the 3 FCMRU Institutions:

- UCF (197)
- FIU (61)
- USF (56)

A total of **166 participants** represented the partnering state college institutions:

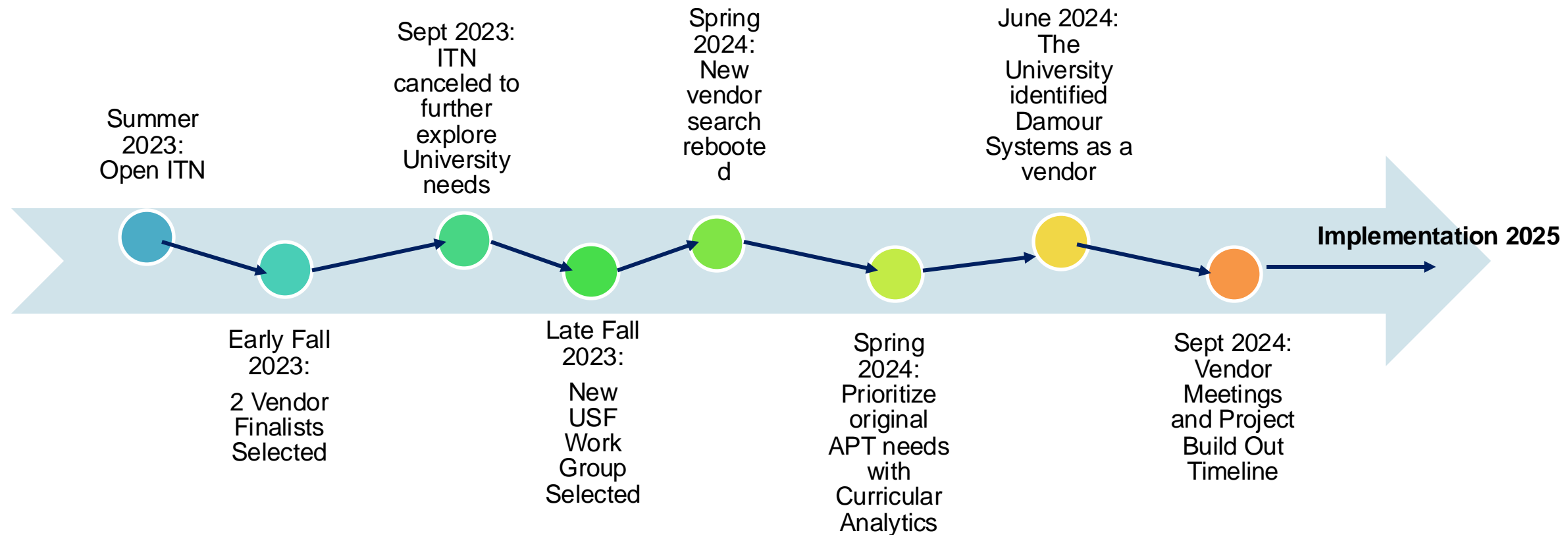
- Broward College (Connect4Success) 35
- College of Central Florida (DirectConnect to UCF) 27
- Palm Beach State College (Connect4Success) 23
- St. Petersburg College (FUSE) 23
- South Florida State College (FUSE) 16
- Miami Dade College (Connect4Success) 13
- Daytona State College (DirectConnect to UCF) 11
- Eastern Florida State College (DirectConnect to UCF) 3
- Polk State College (FUSE) 3
- Lake-Sumter State College (DirectConnect to UCF) 2
- LEAP (FUSE) 2
- St. Petersburg College (FUSE) 2
- State College of Florida (FUSE) 2
- Santa Fe College (FUSE) 1
- Seminole State College (DirectConnect to UCF) 1
- Seminole State College (DirectConnect to UCF) 1
- Valencia College (DirectConnect to UCF) 1



■ University of Central Florida ■ Florida International University
■ University of South Florida ■ FCS Schools



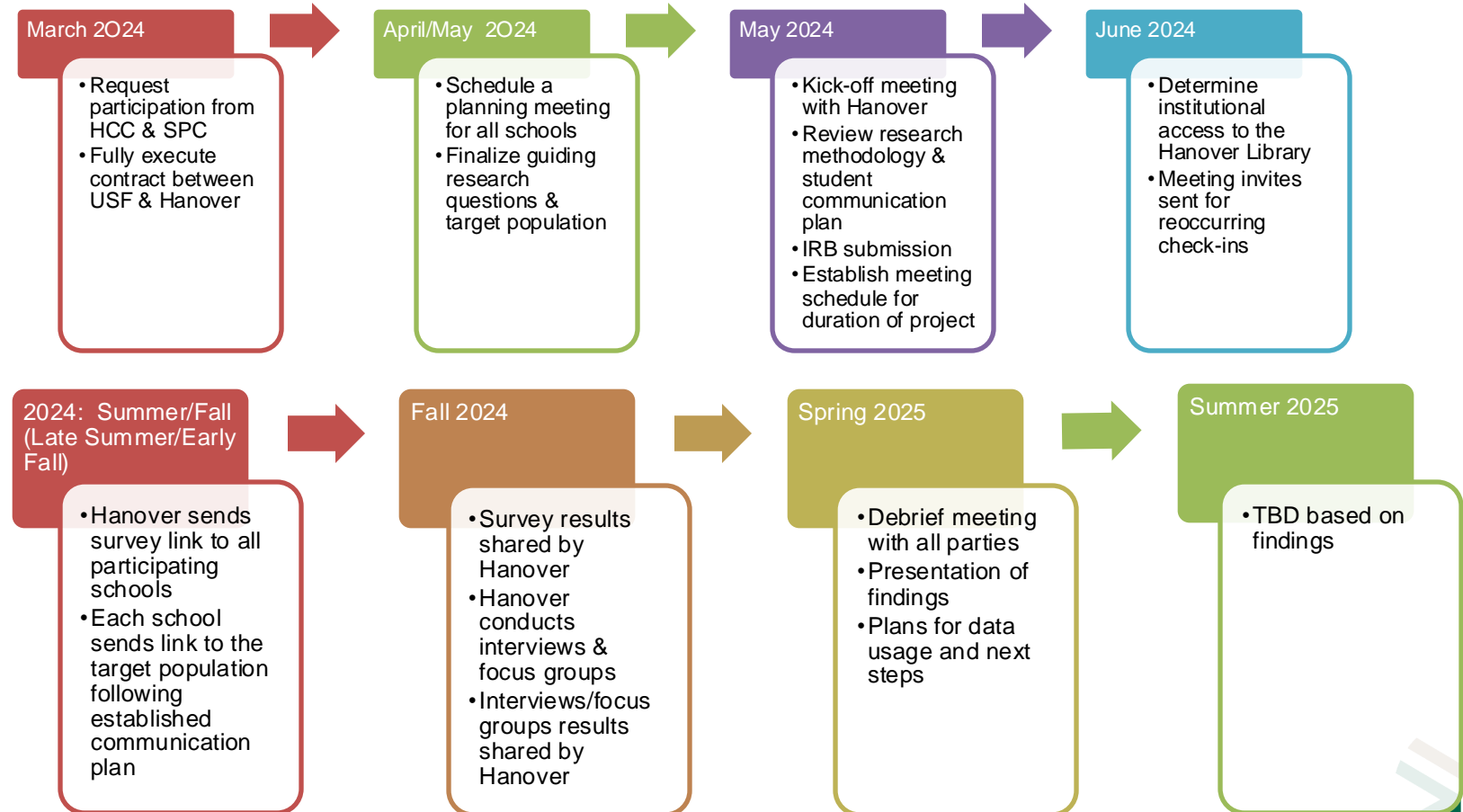
USF ARTICULATION PLATFORM TECHNOLOGY



USF HANOVER RESEARCH



To fill gap in USF predictability models, inform implementation of the articulation platform technology, and enhance understanding of barriers to student transfer from the FCS to USF, with firsthand student accounts.



A nighttime photograph of a city skyline, likely Dubai, featuring several illuminated skyscrapers and a body of water in the foreground. The lights from the buildings are reflected in the water. The sky is dark, and the overall color palette is dominated by blues, greens, and yellows from the city lights.

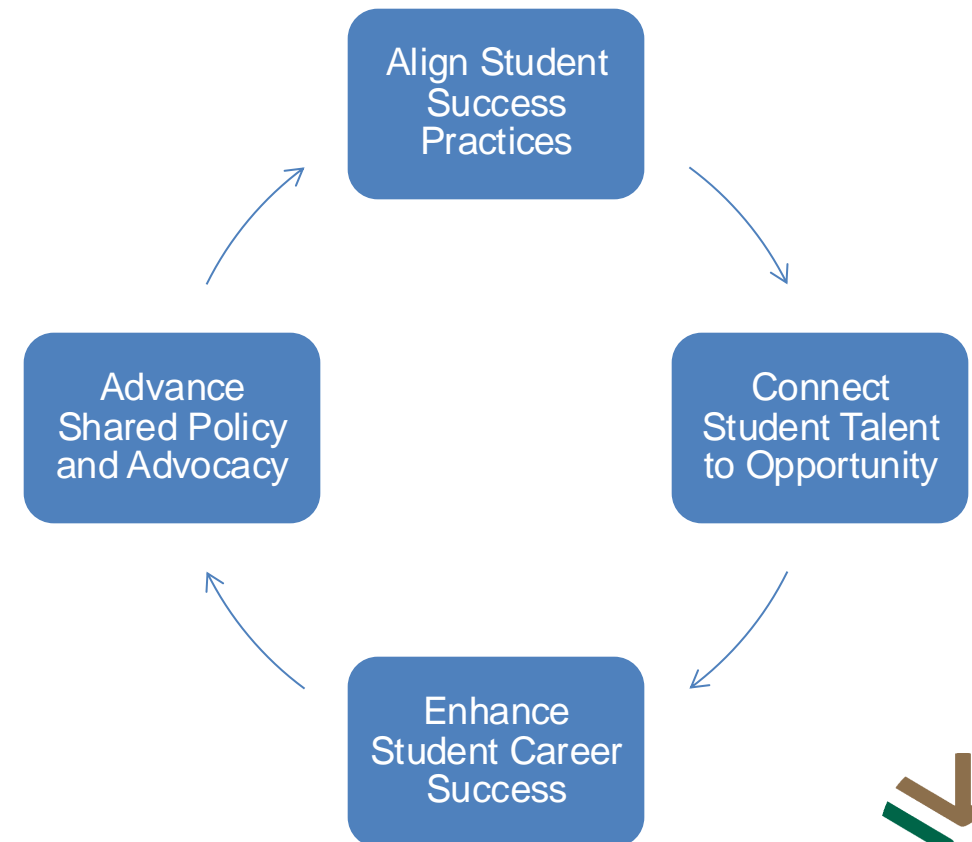
CONSORTIUM EVALUATION LET'S TALK

CONSORTIUM EVALUATION



EVALUATION REPORTS ([2023](#) & [2024](#)):

- Network Leadership Survey (2023)
- Consortium Transfer Summit (2024)
- UCF Higher Education Coaching Academy Consortium Coaching Collaborative (2023 & 2024)
 - Daytona State College Experience with Academic Coaching (2024)
- FIU Transfer Coaching and Student Scholarships (2023 & 2024)
- Articulation Platform Technology (2023 & 2024)
- USF Transfer Research (2024-2025)
- FIU Transfer Research (2024-2025)



TODAY'S CONVERSATION

CURRENT:

1. ...
2. ...
3. ...
4. ...
5. ...

NEW (NEEDED):

1. ...
2. ...
3. ...
4. ...
5. ...

DEBRIEF:

- SHARE 2-3 MAJOR POINTS FROM YOUR CONVERSATION WITH THE GROUP
- SHARE YOUR NOTES WITH SESSION PRESENTERS
- LET PRESENTERS KNOW IF YOU'D LIKE TO BE PART OF A FOLLOW-UP ZOOM ON CONSORTIUM'S PLANS FOR THE FUTURE





FLORIDA
CONSORTIUM
OF METROPOLITAN
RESEARCH UNIVERSITIES

